

# PowerROC T35

Surface drill rig for construction and quarrying

Hole diameter: 64–115 mm (2½"–4½")







# Power up. Fuel down.

The PowerROC T35 lives up to its name — it has all the power you will need to get the job done in the toughest conditions.

PowerROC T35 has been developed and designed for demanding applications in construction operations, aggregate and limestone quarries. The PowerROC T35 has a high penetration rate and can give your operation all the performance and power it needs. The rig is equipped with an intuitive 12 inch touchscreen-

and-button display which monitors its running status. Its one-touch lever operation makes rod changing safer and quicker. In addition, the COP Logic system works in combination with a COP rock drill equipped with a dual damping system which helps to ensure low fuel consumption and high quality holes.

## ⊕ Main benefits

**Fuel efficient** due to Epiroc developed PowerROC control system.

**Ease of operation** thanks to the intuitive touchscreen display which allows for easy system monitoring and offers the operator additional assistance.

**Improved TCO** due to its hydraulic oil return filter and longer service intervals.





# High productivity

The PowerROC T35 is a reliable machine which offers your operation high availability. It is a sturdy workhorse which can drill day-in and day-out and help your operation to be productive. Thanks to the rig monitoring system and easy accessibility, servicing is quick and simple.



## + Efficient and economical

This rig delivers high availability and low fuel consumption. Thanks to its PowerROC control system and overall ease-of-use, the PowerROC T35 offers great value for money — this in turn helps to achieve a fast return on investment and a healthy bottom line for your company. Additionally, the rig is fitted with hydraulic oil return filter and a COP rock drill with long service intervals. Easy troubleshooting and service reminders are integrated in the display. These all help to keep maintenance costs as low as possible.



## + High quality blast holes

The better the hole, the better the blast. Our COP Logic system adjusts to help maintain optimal drilling performance in real time. Additionally, robust hydraulics and a low number of moving parts help to increase reliability. Whatever the rock conditions, the PowerROC T35 helps ensure a high penetration rate and keep the cost of consumables low. The COP Logic system works in combination with a COP rock drill equipped with a damper. This helps to keep the bit in contact with rock and ensures no power goes to waste.



## + User friendly

PowerROC T35 is designed to be simple and straightforward. Servicing is quick and downtime is kept to a minimum. Good operator ergonomics, high visibility and ease-of-use further serve to increase productivity. An air-conditioned FOPS and ROPS- certified cabin and an improved adjustable seat with damper suspension keeps the operator comfortable and safe. The rig is easy to operate with help from the assisted operation system. One-touch lever operation in coordination with four rock modes makes drilling simple.

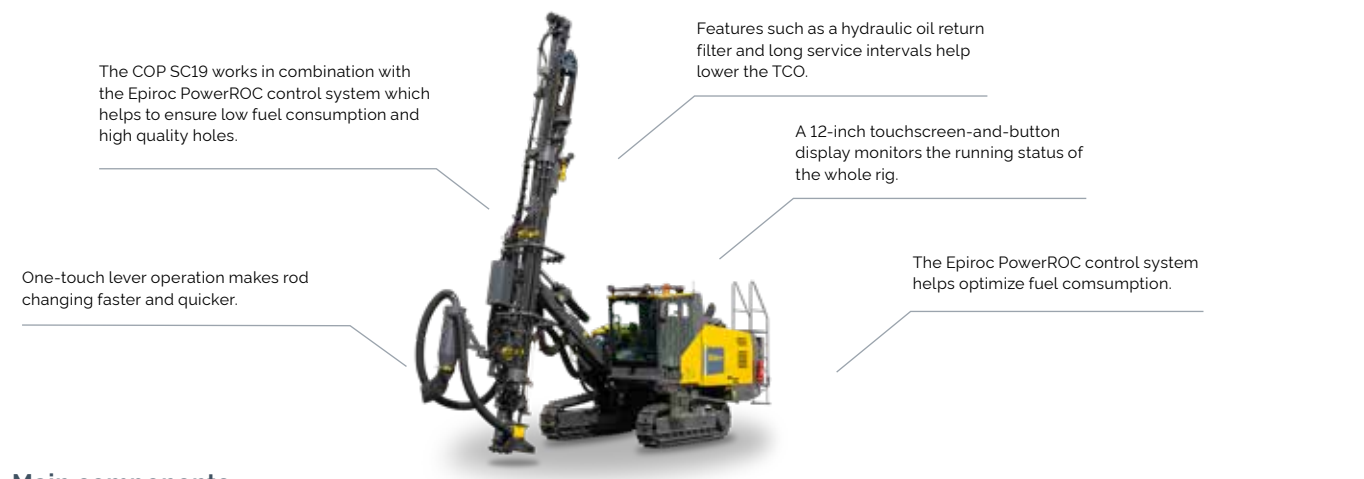


# A comprehensive service offering

Even the best equipment needs to be serviced regularly to make sure it sustains peak performance. An Epiroc service solution offers peace of mind, maximizing availability and performance throughout the lifetime of your equipment. We focus on safety, productivity and reliability.

By combining genuine parts and an Epiroc service from our certified technicians, we safeguard your productivity – wherever you are.

# Technical specifications



## Main components

- Track frames with triple grouser pads, hydraulic track oscillation and two speed traction
- Tier 4 Final (Stage V) diesel engine/Tier 3 (Stage IIIA) diesel engine, CAT C7.1 168kW
- Screw type air compressor
- ROPS and FOPS-certified operator cabin
- Extendable boom system
- Hydraulic motor driven steel feed system
- Carousel type rod handling system
- Hydraulic rock drill
- Dust collection system
- 2D angle indicator
- Fleet Monitoring Solution

## Engine

CAT turbo charged, diesel engine C7.1, Tier 3 (Stage IIIA) / Tier 4 Final (Stage V) - HVO 100-compliant	Metric	US
Power rating at 2 200 rpm	168 kW	225 hp

## Volumes

Hydraulic oil tank	97 l	25.6 US gal
Hydraulic system, total	150 l	40 US gal
Compressor oil	24 l	6.3 US gal
Diesel engine oil	16 l	4.2 US gal
Diesel engine, cooling water	31 l	8.2 US gal
Diesel engine, fuel tank	275 l	72.6 US gal

## Boom

Extendable boom	Metric	US
Boom extension	800 mm	140 psi
Boom lift angle	55° (above)	20° (below)
Boom swing angle	43° (right)	15° (left)

## Electrical system

Voltage	24 V
Batteries	2 x 12 V, 180 Ah
Alternator	24 V, 115 A
Work lights, front and feed	5 x 70 W
Work lights, rear	2 x 70 W
Reverse alarm	

## Hydraulic rock drill

Rock drill	Impact power	Hydraulic pressure	Impact rate	Max torque	Weight approx
COP SC19	19 kW (25.5 hp)	220 bar (3 190 psi)	49 Hz	750 Nm (553 lbf-ft)	174 kg (384 lb)
COP SC19X				*940 Nm (693 lbf-ft)	226 kg (498 lb)

\* With 09 high torque rotation motor

## Hole range (recommended)

Type of drilling	Drill steel type	Drilling diameter	Max hole depth	Drill steel length
Single pass	T38, T45, T51	64-115 mm (2½-4½")	3.66 m (12')	4 270 mm (14')
Extension drilling	T38, T45, T51		25 m (82')	4 270 mm (14') x 1
				3 660 mm (12') x 6

Selection of options

Carrier

- Track chains with single grouser pads
- Central lubrication system
- Cold engine start kit
- Fire prevention cover
- Winch
- Tropical kit, up to 55 °C (option for Tier 3/Stage IIIA version)

Safety cabin

- Warning light – BEACON type
- Driving mirror (R)
- LED light kit
- Multi-view camera
- Short ladder and rear mirror (for USA)

Dust control

- Dust pre-separator
- Anti wear suction hose (Dia. 125 mm)

Lube oil, lube system and water mist system

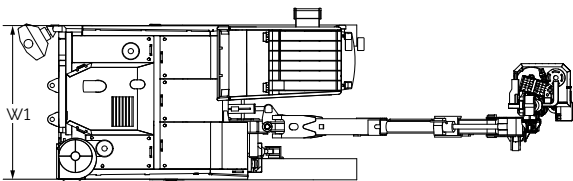
- Water mist system (150 litres water tank)
- Fuel filling pump kit (electric)
- Quick fuel charge kit
- Hydraulic oil filling pump kit
- Rock drill oil separation system



Discover more about the PowerROC T35.

Transport dimensions

	Metric	US
Feed height (h1)	7 820 mm	308'
Cabin height (h2)	2 925 mm	115'
Feed dumped 1		
Height (H1)	3 126 mm	123'
Length (L1)	8 900 mm	350.3'
Width (W1)	2 430mm	95.7'
Feed dumped 2		
Height (H2)	2 986 mm	117.5'
Length (L2)	9 030 mm	355.5'
Width (W1)	2 430 mm	95.7'
Track		
l1	3 175 mm	125'
l2	4 750 mm	187'
Weight (total weight)		
Tier 3/Stage IIIA	14 000 kg	30 865 lb
Tier 4 Final/Stage V	14 888 kg	32 822 lb



CE requirement

- Protection of Moving Parts (PoMP)
- Handrail on top of canopy

Feed

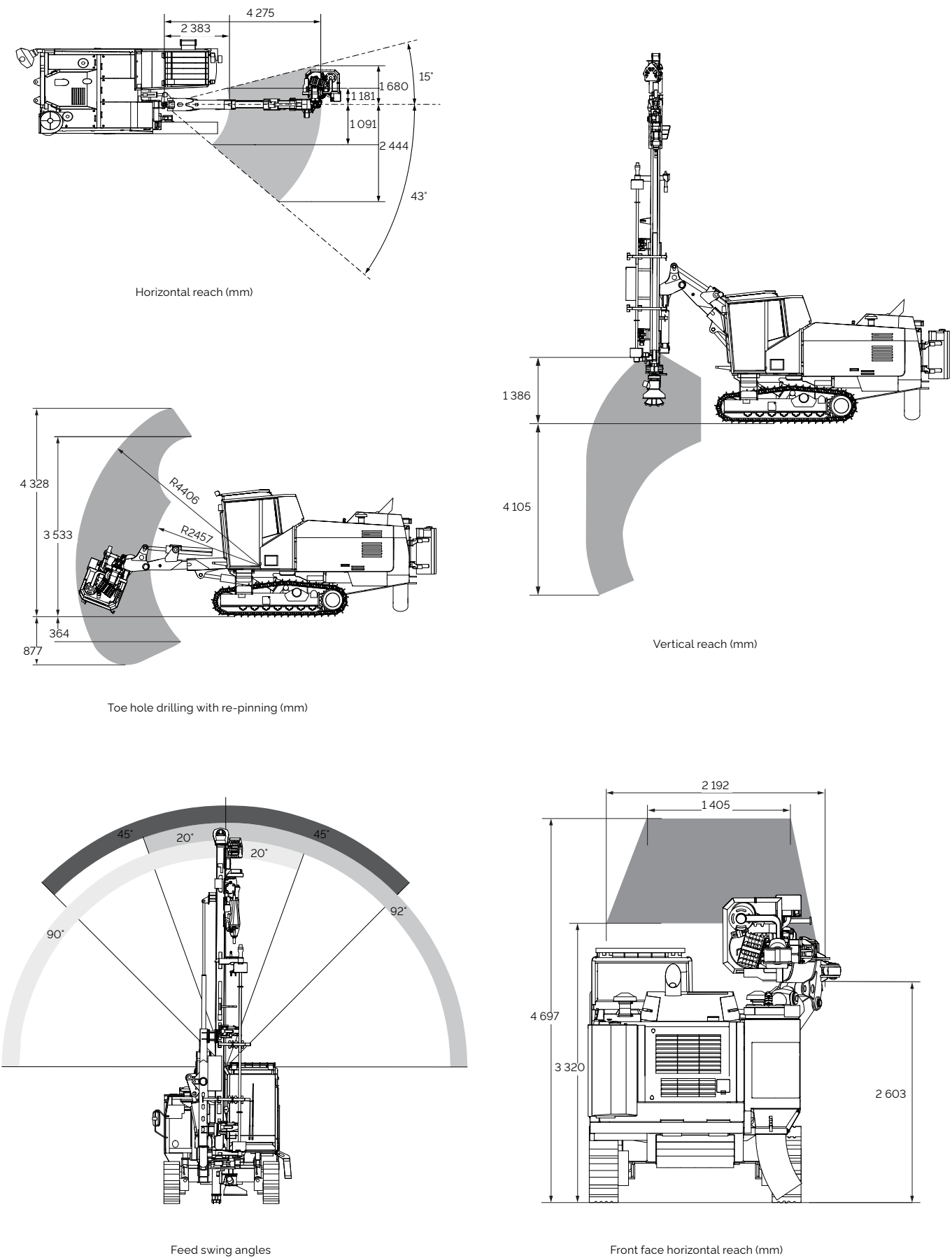
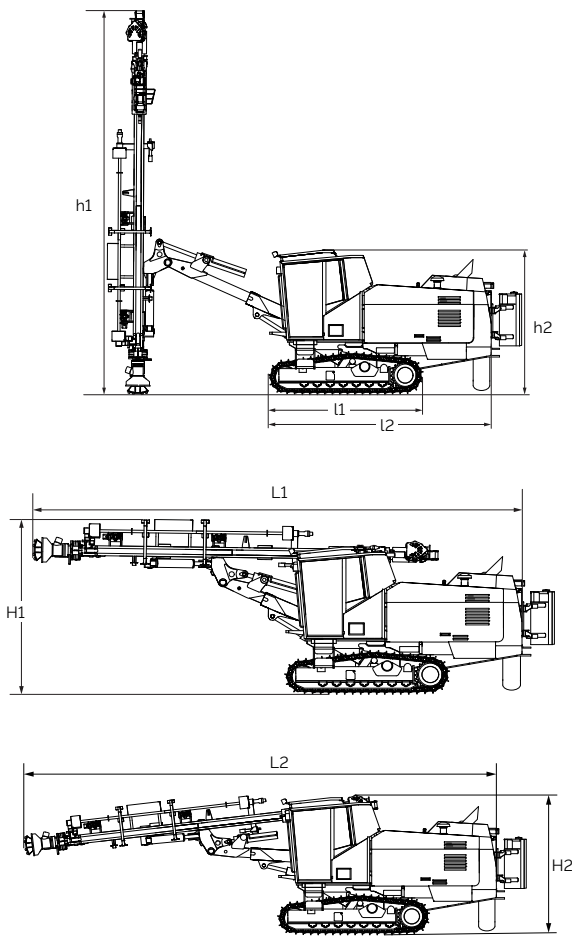
- Extractor on rock drill
- Sleeve retainer
- RHS for T38 SPEEDROD
- RHS for T38 with 55 mm coupling - 3.66 m rod
- RHS for T38 with 55 mm coupling - 3.05 m rod
- RHS for T45 SPEEDROD
- RHS for T45 with 63 mm coupling
- RHS for T45 with 66 mm coupling
- RHS for T51 SPEEDROD
- RHS for T51 with 72 mm coupling
- RHS for T51 with 77 mm coupling

Hole measuring systems

- 3D angle indicator with speed and depth

Delivered equipment, not mounted

- Gas charging equipment for rock drill
- O9 rotation motor kit
- T51/72 - 3.66 conversion kit
- Sticker kit for Japanese market
- Tool set



# United in performance. Inspired by innovation.

Performance unites us, innovation inspires us, and commitment drives us to keep moving forward. Count on Epiroc to deliver the solutions you need to succeed today and the technology to lead tomorrow.

**[epiroc.com](https://epiroc.com)**

