



Products & Services Guide



24 hours a day • 7 days a week

800-221-0586

Drill Bits

NEW DRILL BITS FEATURING:

- Diamond Enhanced Carbide
- Reclaimed Customer Diamond
- Dyanite Carbide
- Standard Carbide

IN HOUSE BIT REPAIR SERVICE:

- Individual Broken Carbide Replacement
- Robotic Arm Dressing of Worn Carbide
- Total Bit Face Reconstruction
- Recycling of Diamond Carbide

WE REPAIR:

- All Major Manufacturers
- All Models
- All Sizes

CUSTOM BIT MANUFACTURING

ALSO AVAILABLE:

- Bit Retrieval System
- Blow Tubes
- Drive Pins
- Thrust Washers



Refurbished Bit—Before and After



Symmetrix

Smooth, Straight Holes... Straight to the Bottom!

Symmetrix is a patented under-reaming system available from Atlas Copco for overburden drilling with casing.

APPLICATIONS:

- Ground Consolidation
- Water Well Drilling
- Drilling Under Roads
- Anchor Hole Drilling
- Piling & Under Pinning
- Slope Control
- Mountain Highway Projects
- Reservoirs
- Dams
- Mine
- Chip Sampling
- Bulk Sampling & Rat Holes
- Tunneling
- Jet Grouting
- Horizontal Drilling
- Top Holes for Oil & Gas

ADVANTAGES:

- Straight Holes Fast
- Less Torque in All Formations
- Simple Foolproof Design
- Easy to Unlock & Re-Lock
- Drills at Any Angle
- Effective Internal Flushing
- Safe
- Economical

AVAILABLE:

- Standard Econ Version
- SE Version
- N-Version

COMPONENTS:

- Pilot Bit
- Casing Shoe
- Retainer
- Ring Bit



Down Hole Drills

3 5/8" to 36" Purchase or Rental

FEATURING:

- Total Depth
- Quantum Leap
- DHD Classic

INSPECTION SERVICE:

- Inspection
- Cleaning
- Measurement

DHD Class	DHD Model Number	Hole Size Range
3"	TD35-STD	3.5" - 3.94"
	DHD 3.5	3.5" - 3.94"
4"	QL40	4.125" - 5"
	DHD4P	4.125" - 5"
	DHD340AP	4.125" - 5"
5"	TD50-STD	5.125" - 6"
	TD55-STD	5.5" - 6"
	QL50	5.125" - 6"
	QL55QM	5.5" - 6"
	DHD50	5.125" - 6"
6"	TD60-STD	6" - 8.5"
	TD65-STD	6.5" - 8.5"
	QL60 PLUS	6" - 8.5"
	QL60HF	6" - 8.5"
	QL65QM	6.5" - 8.5"
	DHD60	6" - 8.5"
8"	TD80-STD	7.875" - 12"
	TD90-STD	8.875" - 12"
	QL80	7.875" - 12"
	QL80HF	7.875" - 12"
	DHD80	7.875" - 12"
10"	TD95-STD	9.875" - 12.25"
12"	QL120	12.25" - 22"
	DHD120	12.25" - 22"
	DH11 (HC)	11" - 17.5"
	DHD112W	11.875" - 17.5"

HAMMER OPTIONS:

- Jet Subs
- Hydrocyclones
- Retrieval Systems



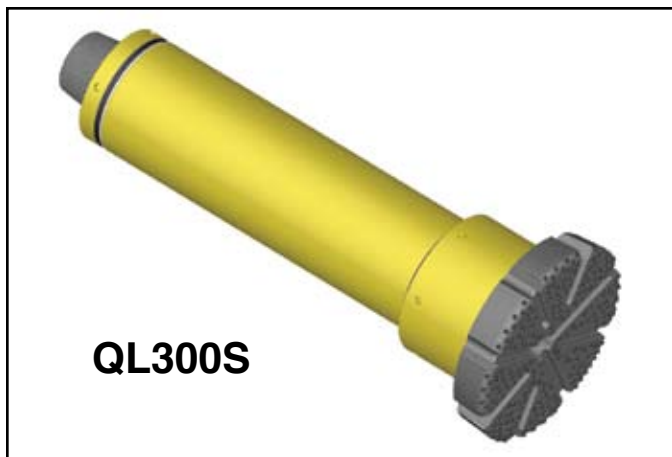
Large Diameter Down Hole Drills

17 1/2" to 48" Purchase or Rental

- QL200 Hole Size Range – 17.5" to 26"
- QL200S Hole Size Range – 28" to 36"
- QL300 Hole Size Range – 30" to 36"
- QL300S Hole Size Range – 40" to 48"

FEATURES AND BENEFITS:

- Large Range of Hole Sizes by Adding/Removing "S" Chuck
- Straight Holes (Even on Sloping Beds)
- Drills Faster than other methods



Cluster Drills

- Single Canister
- 8" Down Hole Drills
- Designed for 30" and Larger Holes
- Optimum Cutting Speed/Bit Life

APPLICATIONS FOR CLUSTER DRILL:

- Shafts
- Pilings
- Caissons
- Access Holes
- Pole Holes
- Pipeline Supports
- Curtain Walls
- Rescue Shafts

FEATURES AND BENEFITS:

- Short, lightweight package that will easily adapt to many Geo-Technical drill platforms.
- Highly efficient and reliable CS8 hammers provide power with minimal air consumption.
- Modular build allows rapid construction of custom diameter units.
- Quick-Change bits can be removed and serviced without costly and time consuming disassembly of drill.
- Dual-Manifold Can and Module Construction allows use in reverse circulation, mud-water flushed applications.



Air Boosters

Boosters

- New and Rebuilt Booster Packages
- Booster Service & Repairs
- Booster Parts
- Booster Rentals
- Ariel Single & Two Stage Packages
- Gardner Denver Single & Two Stage Packages



Booster Features

FEATURING:

- **Mounting:** rugged, heavy-duty oil field skid, frame, or trailer mounted
- **Engine:** conservative horsepower rating
- **Coolers:** ASME Code Stamped and National Board Registered
- **Gear Box:** heavy-duty gear box with oil cooling on Gardner Denver/Joy models
- **Scrubber Bottles:** ASME Code Stamped and National Board Registered
- **Pulsation Bottles:** ASME Code Stamped and National Board Registered
- **Piping:**
 - Two stage units capable of single stage operation
 - Booster bypass piping included
 - Hydro tested
- **Engine:** includes all standard controls, instrumentation, and shutdowns
- **Booster:** complete booster controls including necessary temperature/pressure gauges & shutdowns
- **Murphy Panel:** Ariel Boosters equipped with Murphy Panel



High Pressure Air Compressors

The Air Force on the Planet!

FEATURING:

- New Compressor Packages (350 PSI & 500 PSI)
- Custom Built Compressor Packages
- Compressor Repairs
- Compressor Parts
- Maintenance Parts
- Compressor Rentals
- Airends In Stock
- Airend Rebuilds

SOME FEATURES INCLUDE:

- Available on Heavy Duty Oil Field Skid or Frame
- Towable
- Two-Stage Rotary Screw
- Fuel Efficient Diesel Engine
- Whisperized and Non-Whisperized
- Air Cooled Aftercooler



400 CFM/200 PSI Wheel Mounted



1170 CFM/350 PSI Wheel Mounted

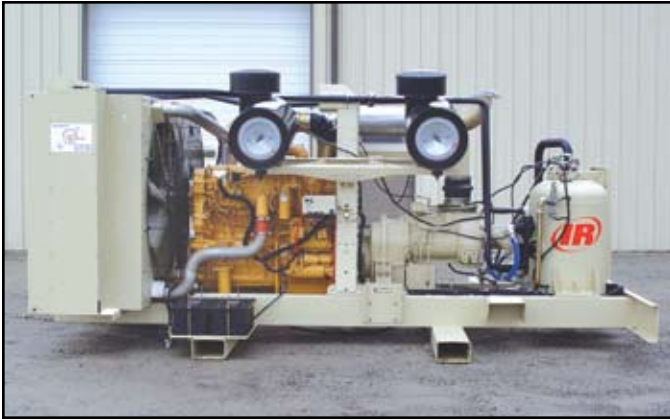


750 CFM/300 PSI Wheel Mounted



1600 CFM/150 PSI Wheel Mounted

Your Power, Our Compressor



**1170 CFM/350 PSI Frame Mounted
(Ideal for Truck or Trailer Installation)**



**1170 CFM/350 PSI
with Aftercooler Mounted on
Heavy Duty Oil Field Skid**



**1150 CFM/500 PSI – 1350 CFM/350 PSI
Dual Capacity**



COMPRESSOR MODULES:

- Low Pressure Models Available
- High Pressure Models Available
- All Components are included with Module except Engine

Accessories

At Keystone, we offer quality parts at competitive prices. We carry a complete inventory of parts for all equipment we sell and service. Call us today for any parts needs.

- Subs
- Drill Pipe
- Air Swivels
- Compressor & Rock Drill Oil
- Fishing Tools
- Thread Grease
- Bit Retrieval System
- Over-The Hammer Stabilizers
- Blow Tubes
- Drive Pins
- Thrust Washers
- Aftercooler Packages
- Precooler Packages
- Filter Packs
- Dryers
- Air Hose
- Shock Subs

SCORPION BREAK-OUT/MAKE-UP DEVICE:

- 800ST Model (2 3/8" - 11" Working Range)
- 2000LRT Model (11" - 30" Working Range)



KEYSTONE LUBRICATOR:

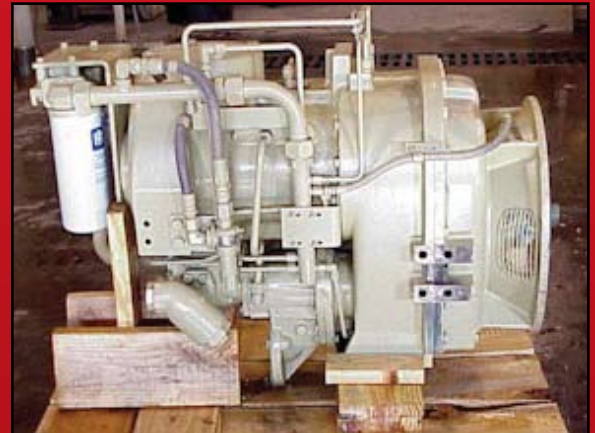
- Venturi Style
- Sight Glass
- ASME Pressure Vessel
- 2" or 3" Connection
- Infinite Flow Control with Needle Valve
- Manifold Can Be Removed from Tank and Remote Mounted
- Easy to Remove Cap
- Fill While You Drill
- Fits on Any Drill Rig
- No Moving Parts
- No Pumps
- No Wiring

Available In:

- 7 Gallon - 600 PSI
- 12 Gallon - 600 PSI
- 17 Gallon - 1000 PSI
- 33 Gallon - 1000 PSI



AIREND REBUILDING & REPAIRS



SERVICE TRUCKS:

- 24 Hour/7 Day Service
- Factory Trained Service Personnel



AIREND

Models in Stock:

- 900/350
- 1070/350
- 1170/350
- 1250/350

Contact

Servicing the following industries:

- Oil & Gas
- Foundation/Constuction
- Pipeline Dewatering & Testing
- Elevator Shaft
- Industrial
- Horizontal Boring
- Water Well
- Blast Hole
- Utility
- Open Pit Mining & Quarrying
- Specialty



24 hours a day • 7 days a week

800-221-0586

According to Webster...

key•stone

something on which associated things depend on for support...an essential part



Pennsylvania Facility

184 Alisa Street
Somerset, Pennsylvania 15501
Telephone: 814-443-2670
Service: 814-443-2670 Ext. 223
Parts: 814-443-2670 Ext. 230
Engineering: 814-443-2670 Ext. 228
Toll Free: 800-221-0586
FAX: 814-443-6974
Email: sales@keystonedrill.com
www.keystonedrill.com



Virginia Facility

443 Hawthorne Drive
Norton, Virginia 24273
Telephone: 276-679-1750
FAX: 276-679-3033



Colorado Facility

356 Bonny Street
Grand Junction, Colorado 81501
Telephone: 970-245-0400
Toll Free: 877-245-0401
FAX: 970-245-5476